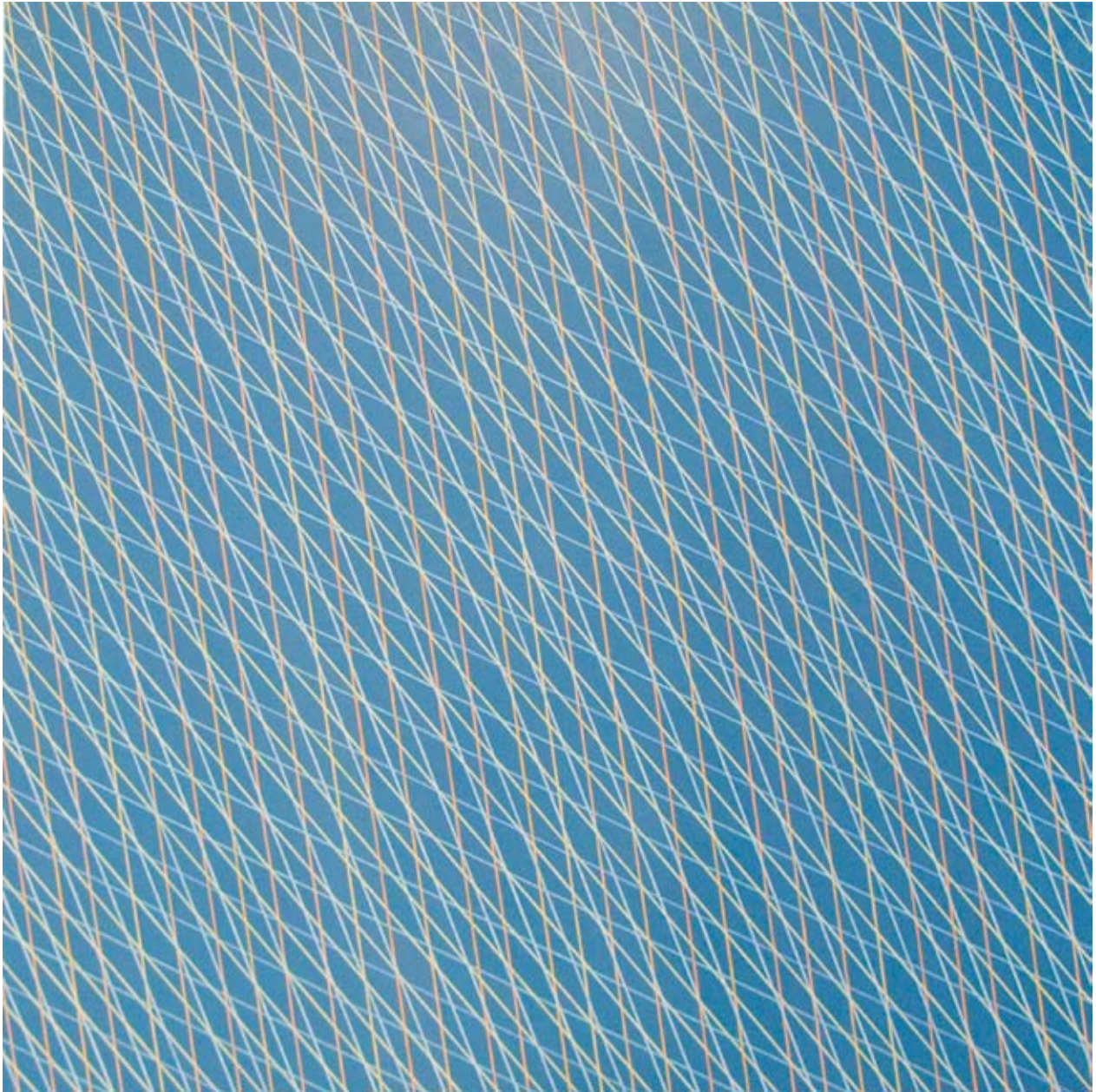


ANNANDALE GALLERIES

LESLEY DUMBRELL

# ANNANDALE GALLERIES



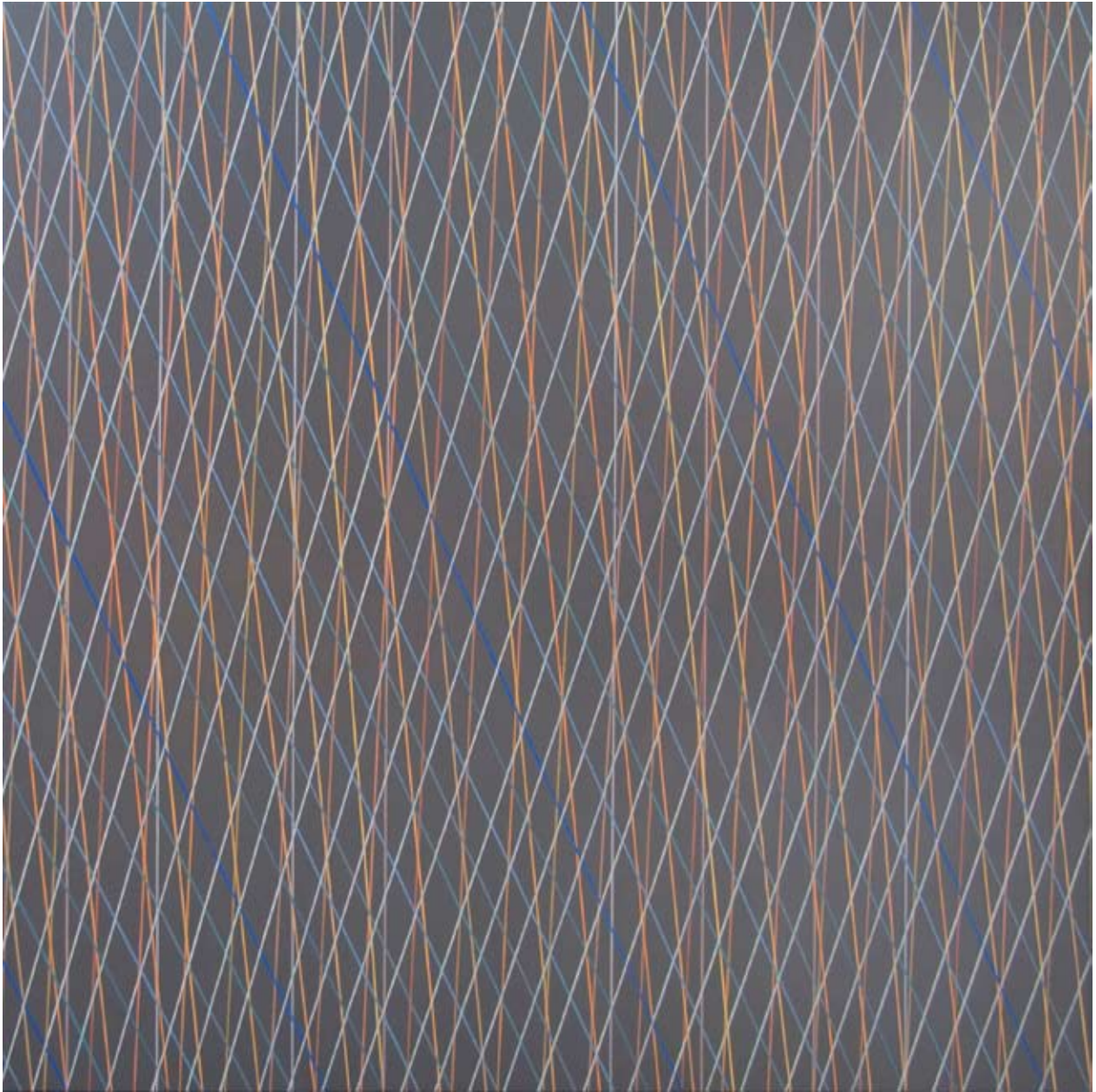
Lesley Dumbrell  
*Cerulean* 2010  
oil on linen  
122 x 122 cm  
LD 47  
\$9,900

# ANNANDALE GALLERIES



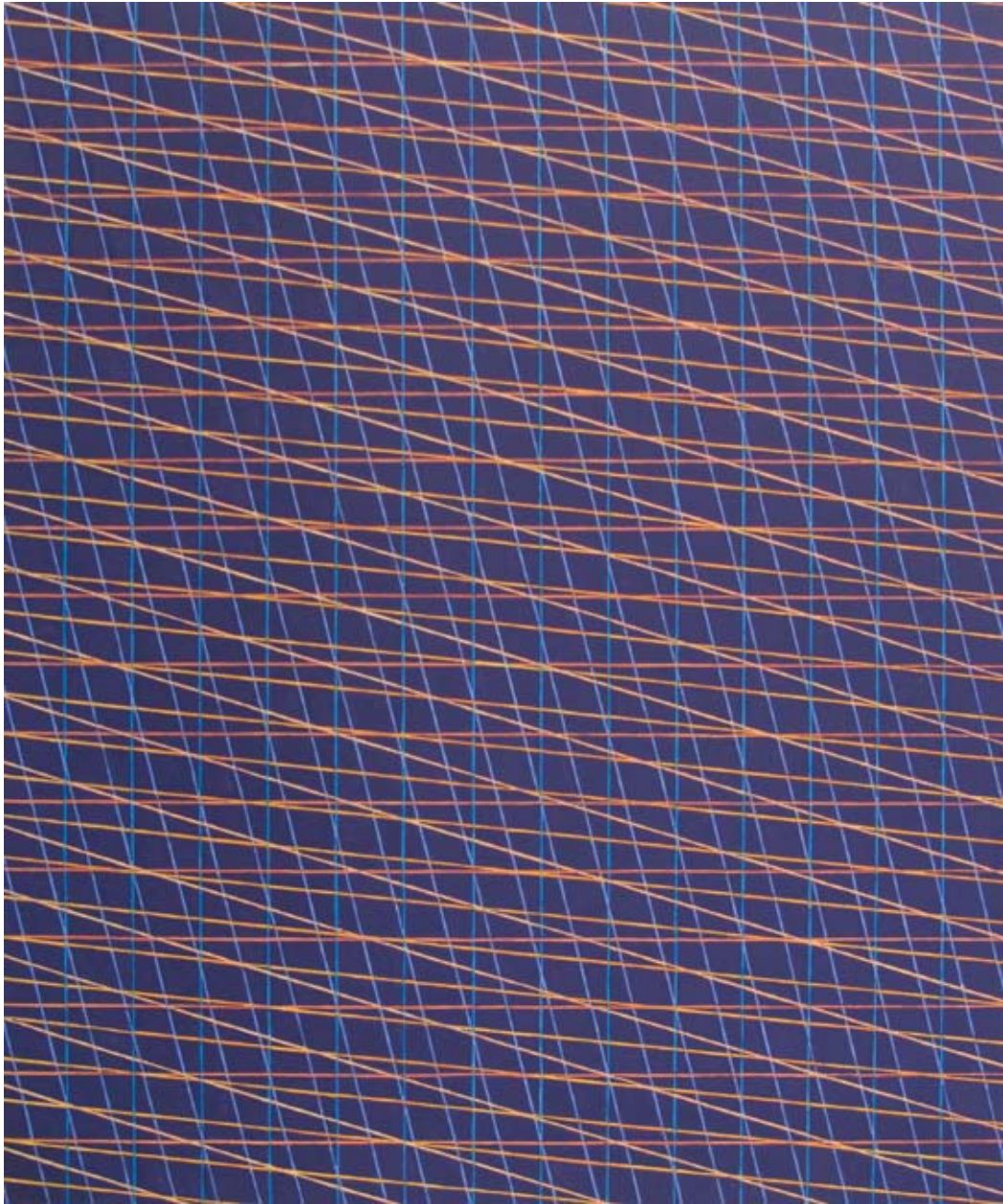
Lesley Dumbrell  
*Columbine* 2008  
oil on linen  
172 x 229 cm  
LD 48  
\$16,500

# ANNANDALE GALLERIES



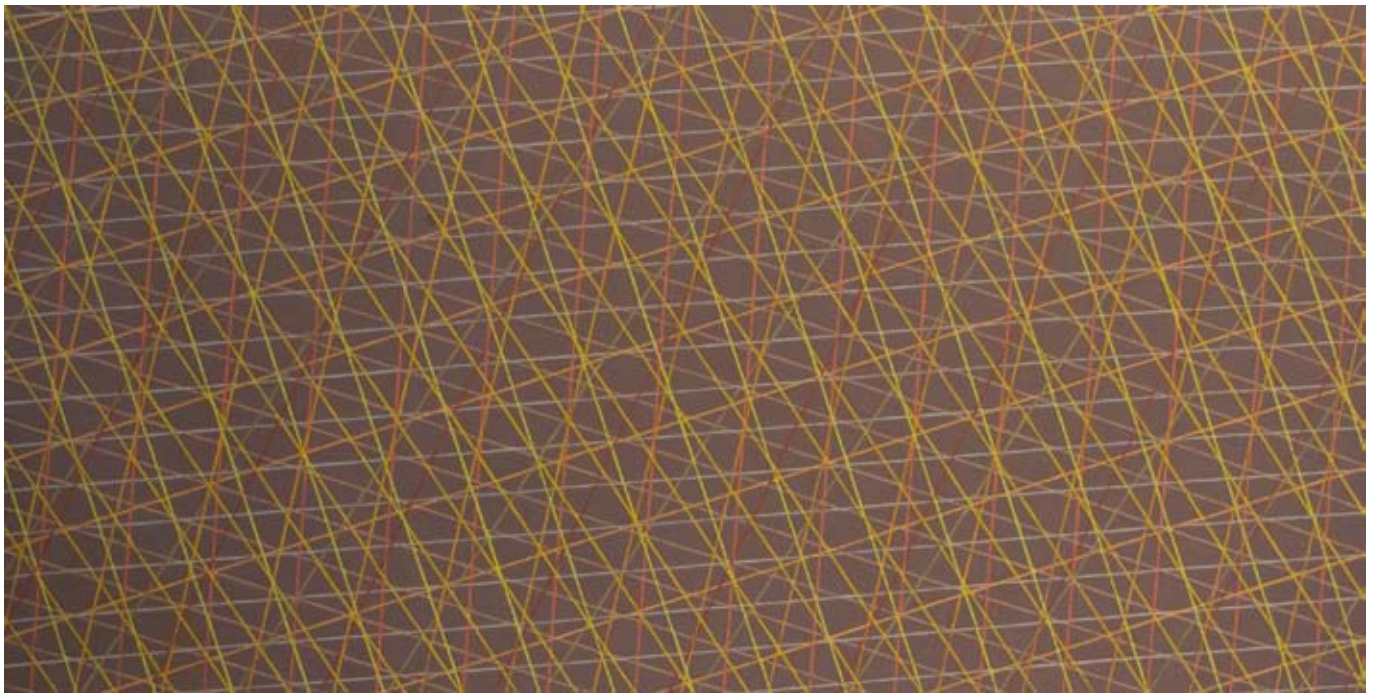
Lesley Dumbrell  
*Pandius* 2009  
oil on linen  
122 x 122 cm  
LD 49  
\$9,900

# ANNANDALE GALLERIES



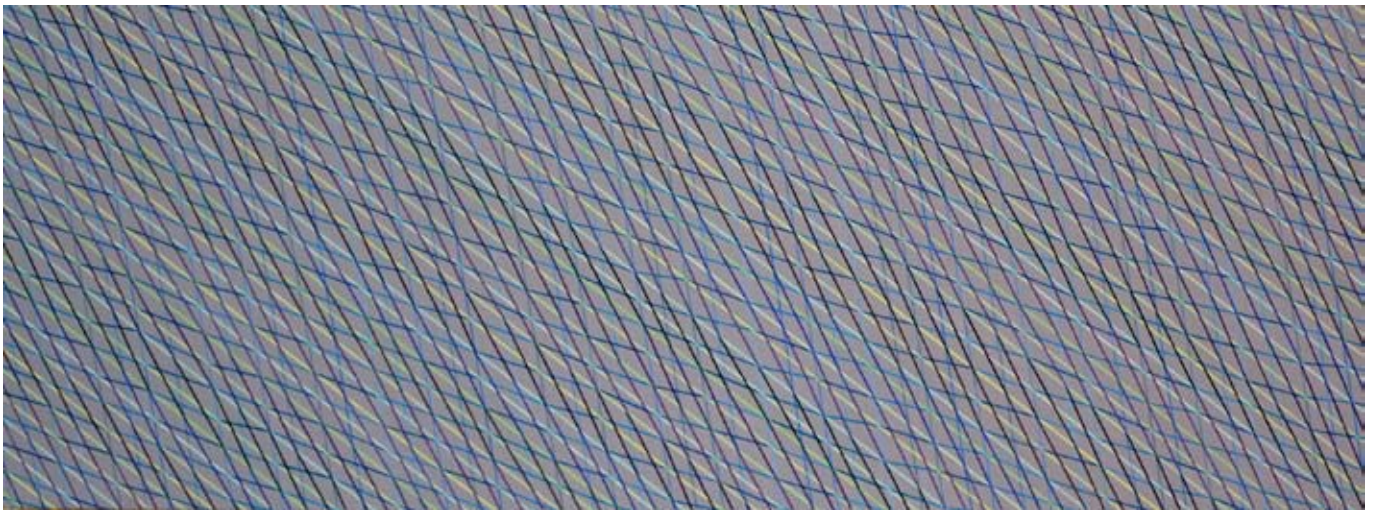
Lesley Dumbrell  
*Study For Azurine* 2008  
gouache on paper  
54 x 45 cm  
LD 50  
\$3,300

# ANNANDALE GALLERIES



Lesley Dumbrell  
*Study For Cimmerian* 2008  
gouache on paper  
35 x 72 cm  
LD 51  
\$3,300

# ANNANDALE GALLERIES



Lesley Dumbrell  
*Aqua* 2010  
oil on linen  
91.5 x 183 cm  
LD 52  
\$9,000

# ANNANDALE GALLERIES



Lesley Dumbrell  
*Verdure* 2010  
oil on linen  
122 x 122 cm  
LD 53  
\$9,900



# ANNANDALE GALLERIES

LESLEY DUMBRELL - born 1941  
lives & works in Melbourne, Australia

Lesley Dumbrell is a painter with a sophisticated understanding of the use of colour. Her more recent works consist of polychromatic criss-crossed lines painted over a monochromatic ground. The angles of the lines change across the picture resulting in a dynamic experience for the viewer, where as you move, Dumbrell's paintings flicker and glint. Her work clearly seems concerned with the processes of perception.

Dumbrell carries on a tradition of geometric abstraction in Australian art. Her colour field works have been influenced to some extent by the Op Art movement of the 1960's, Bridget Riley and Raphael de Soto being key influences.

Dumbrell has been the recipient of numerous awards and honours throughout her career, while she has embarked on various commissions in Australia and abroad. She has shown extensively in solo and group exhibitions throughout Australia and Asia, and has work in all major museums and state collections across the country.